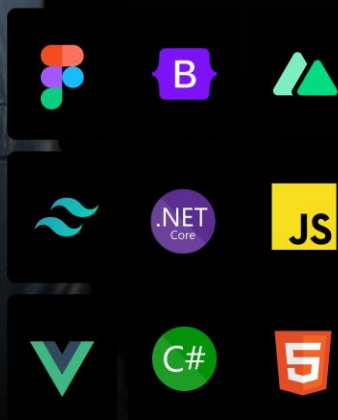


Arash Mahdavian

☎ (647) 646 5803



Comprehensive Business Model

Workflow, and Pricing Proposal

Our Business Models

1

**Project-Based
Model**

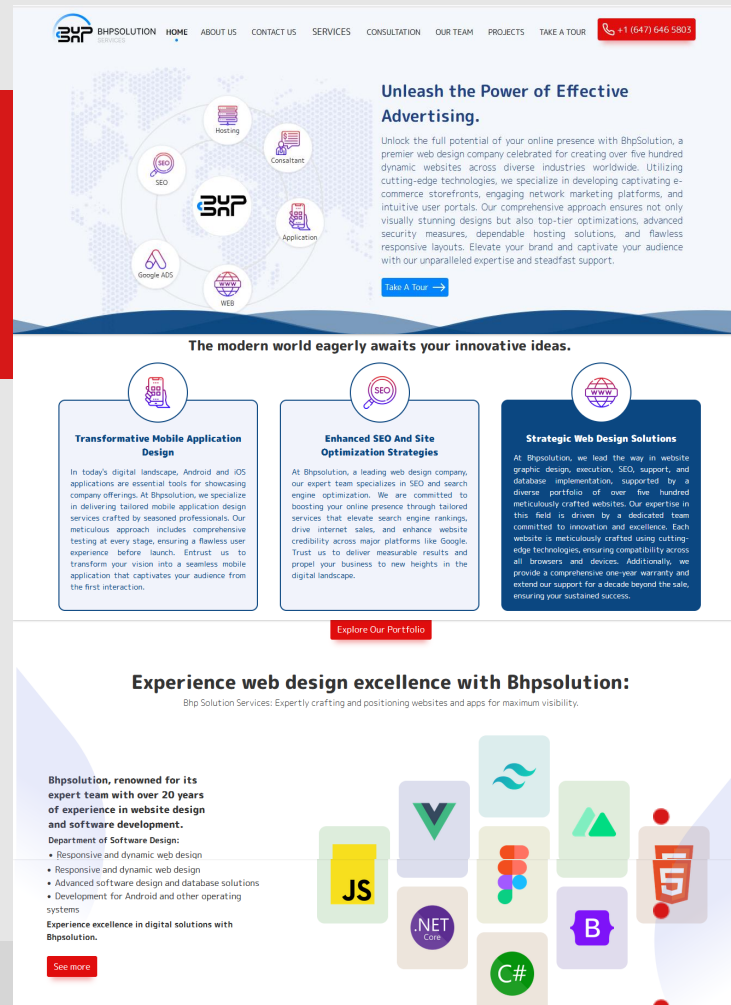
2

**IT Staff
Augmentation**

Introduction

With 20 years of IT and software development expertise, we offer tailored solutions through IT Staff Augmentation and Project-Based models. Our skilled team covers Full Stack, Frontend, Backend, DevOps, and Data Engineering, delivering high-quality, end-to-end services to solve complex business challenges. By combining strategic planning, transparent communication, and efficient workflows, we ensure every project drives measurable results aligned with your business objectives..

Follow me at bhpsolution.com to learn more.

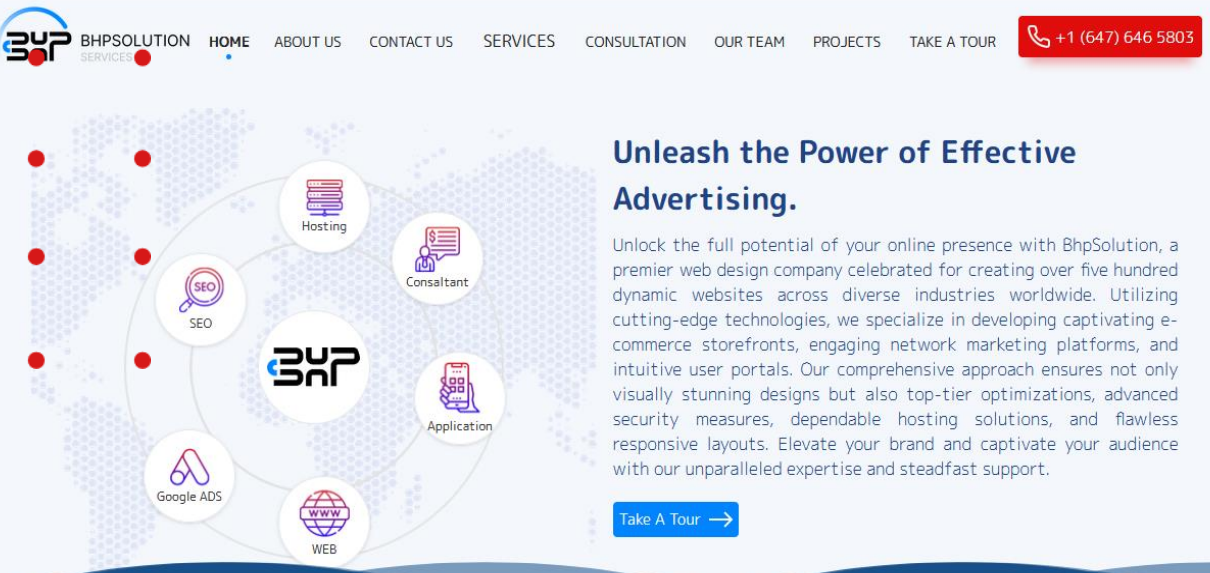




Delegate your project, rest easy.



- **Complete Lifecycle Management:** We take ownership of the entire project lifecycle, from initial planning through development, testing, deployment, and ongoing maintenance. Our project management approach is structured around clear milestones and deliverables to ensure alignment with client expectations.
- **Advanced Technical Expertise:** Each project is led by a dedicated team of industry experts who are well-versed in the latest technologies and methodologies. We leverage cutting-edge tools and practices to deliver innovative, high-quality outcomes.
- **Customizable Milestones and Timelines:** Our project-based pricing model is tailored to fit your specific project scope, timeline, and complexity. Clear communication and defined milestones allow for flexibility and adaptability throughout the project's lifecycle.
- **Quality Assurance:** Rigorous testing and quality control processes are integrated into every project to ensure that final deliverables meet the highest standards. We provide comprehensive post-delivery support to ensure smooth transition and address any issues that arise post-deployment.



The image displays three service cards for Bhpsolution, arranged horizontally. Each card has a blue header with a white icon in a circle. The first card, 'Transformative Mobile Application Design', features a smartphone icon and describes mobile app development services. The second card, 'Enhanced SEO And Site Optimization Strategies', features a magnifying glass over a 'SEO' tag icon and describes search engine optimization services. The third card, 'Strategic Web Design Solutions', features a globe icon with 'WWW' and describes website design and development services. All cards have a light blue background and a blue border.

Bhp Solution Services: Expertly crafting and positioning websites and apps for maximum visibility.

[See more](#)

2

Support, Training...

- **Scalability and Flexibility:** We offer scalable solutions that allow your business to expand and contract resources based on demand. This model is ideal for handling short-term projects, peak periods, or long-term engagements without the overhead costs of permanent hires.
- **Expert Talent:** Gain access to a diverse pool of pre-vetted professionals who bring expertise across various technologies. Each candidate is carefully matched to your project requirements to ensure seamless integration and high performance.
- **Customization:** Our staff can be hired on a full-time, part-time, or project-specific basis to meet your specific needs. We offer comprehensive onboarding, including tool integration, process alignment, and team collaboration strategies.
- **Cost Efficiency:** By leveraging our extensive network and pre-vetted talent, we help reduce recruitment costs, accelerate project timelines, and improve overall efficiency.
- **Ongoing Support:** Continuous monitoring, regular reporting, and proactive problem-solving are embedded into our process to maintain the highest level of service delivery and ensure project success.



Current Workflow

Our workflow is meticulously designed to ensure efficiency, transparency, and results-driven outcomes:

Consultation & Requirements Gathering :

- We initiate every engagement with a thorough consultation session to understand your business objectives, current workflows, and specific project requirements.
- Our team collaborates closely with stakeholders to map out a detailed strategy and craft a solution that aligns with your goals.

Proposal and Talent Selection :

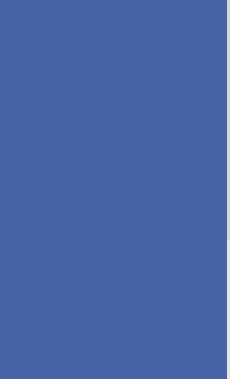
- For IT Staff Augmentation: We present a curated list of pre-vetted candidates who possess the right skills, qualifications, and experience to match your project needs. Each profile includes detailed information on past projects, technical competencies, and feedback from previous clients.
- For Project-Based Work: A comprehensive project proposal is developed, including scope, timelines, deliverables, and milestones. This proposal serves as a blueprint for the project and ensures a clear understanding of client expectations.



Onboarding and Kick-Off :

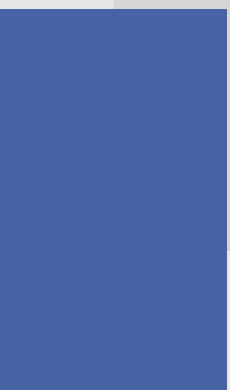
- Seamless onboarding of selected talent into your existing team or project environment. This includes configuring necessary tools, aligning workflows, and establishing effective communication channels.
- We set up a robust project management framework to facilitate smooth collaboration and ensure that all team members are aligned with project goals and timelines.

Execution and Monitoring :

- For IT Staff Augmentation: Continuous performance monitoring ensures that resources are effectively integrated into your team, with regular check-ins to assess progress and address any challenges. We provide regular updates on task completion and performance metrics.
 - For Project-Based Work: Detailed milestone tracking and reporting mechanisms are established to maintain a clear view of project progress. We actively manage project risks, address any issues as they arise, and make adjustments as needed to keep the project on track.
 - Advanced Project Management: Our project managers oversee every phase of development, ensuring that tasks are completed on time, quality standards are met, and any roadblocks are proactively addressed.
- 



Delivery and Post-Support :

- Delivery of final project outcomes on schedule with a focus on quality and compliance with agreed-upon deliverables.
 - Post-delivery support ensures that any issues are promptly addressed, and the transition to maintenance or ongoing support is seamless. We provide comprehensive documentation, user training, and technical support to facilitate post-delivery operations.
- 

Cost Estimates for Implementation

Our pricing model is designed to provide clarity, flexibility, and maximum value based on the level of experience, role, and project complexity. Here's a more detailed pricing table for IT Staff Augmentation:

Location	Level of Experince	Role	Hourly Rate (CAD)
US / Remote	Senior (6+ Years)	Full Stack	80-100
CAD/ Remote	Senior (6+ Years)	PM	120-150
CAD/ Remote	Senior (6+ Years)	Full Stack	100-120
CAD/ Remote	Mid-Level (3–5 Years)	Back/Front	60-80
IR/ Remote	Senior (6+ Years)	Full Stack	15-25
IR/ Remote	Mid-Level (3–5 Years)	Back/Front	10-15
IR/ Remote	Junior (3 Years)	Back/Front	8-10
India/ Remote	Senior (6+ Years)	Full Stack	25-35
India/ Remote	Mid-Level (3–5 Years)	Back/Front	15-25
US / Remote	Mid-Level (3–5 Years)	Devops	60-80

Implementation Tools

Technology

ASP.NET >> C#

Data bases

SQL SERVER

Postgres

Design tool

Figma

Front-end

Web application :

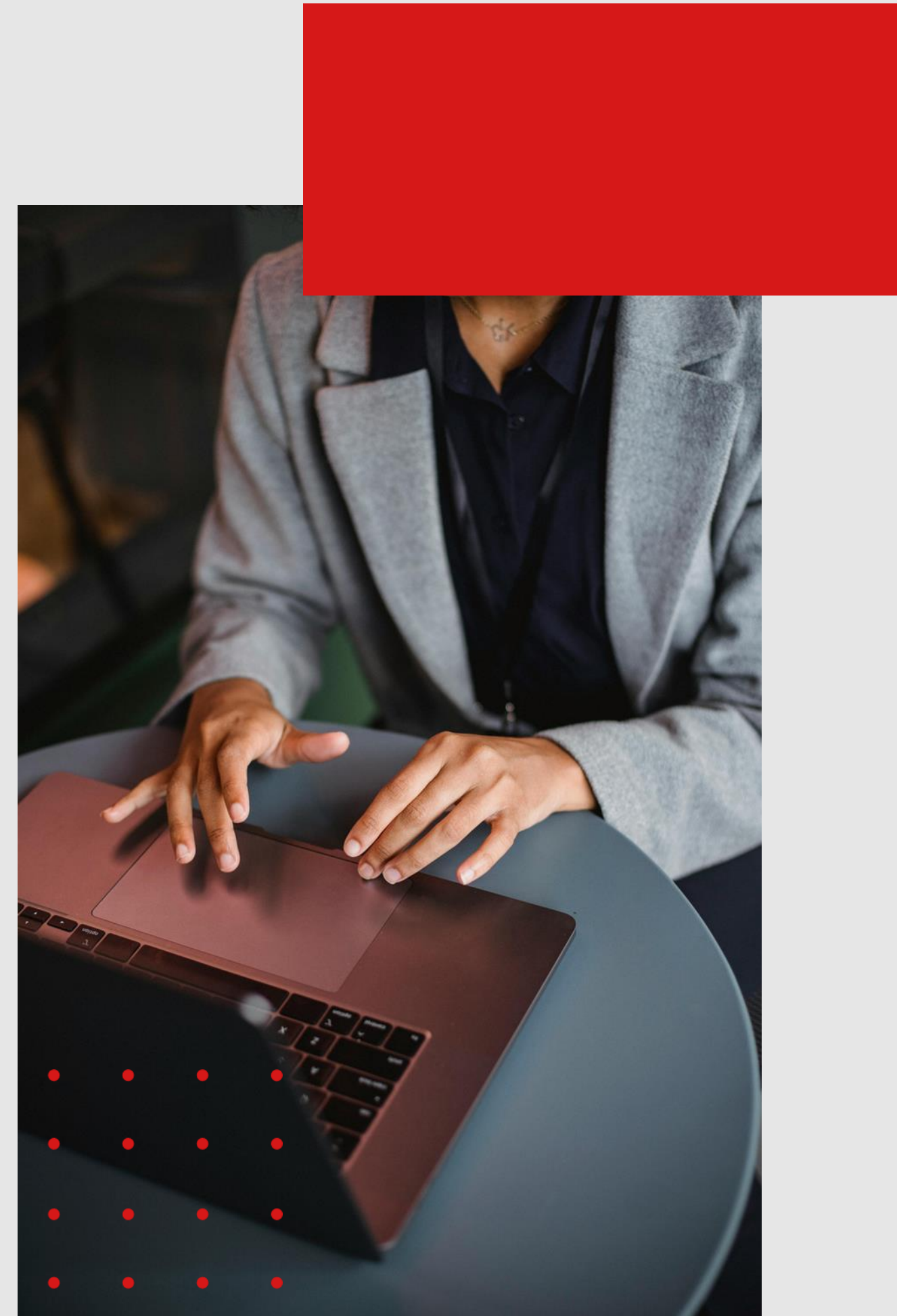
VUE.JS

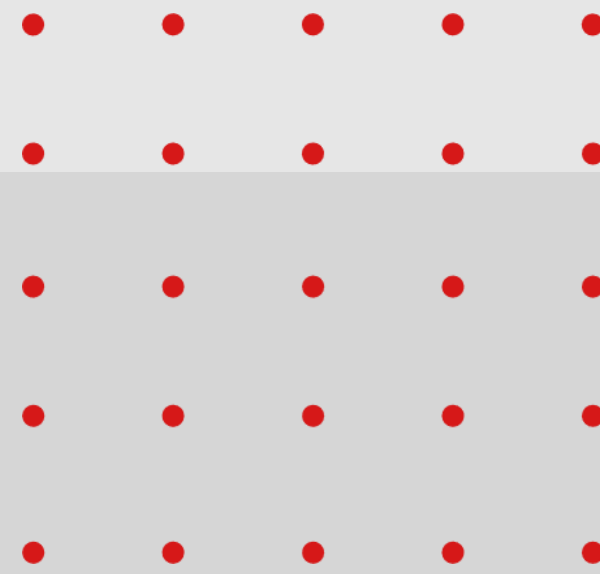
React JS

Mobile application :

React native

Important notice: No off-the-shelf software will be used in the implementation of this system; every aspect of the site will be analyzed and developed according to the user's needs.





Additional Notes

- Pricing can vary depending on the specific technical roles (Frontend, Backend, DevOps, QA, Data Engineers).
- For Project-Based Work, pricing is tailored based on the project's scope, timeline, and complexity. A custom quote will be provided following an initial evaluation



Our Responsibilities

For IT Staff Augmentation:

- Resource Provision: We supply pre-vetted, highly skilled professionals tailored to meet your specific technical requirements.
- Integration: Our team integrates seamlessly with your existing workflows, ensuring minimal disruption and maximum productivity.
- Performance Monitoring: Regular reporting, performance reviews, and feedback mechanisms to ensure successful outcomes and alignment with client goals.

For Project-Based Work:

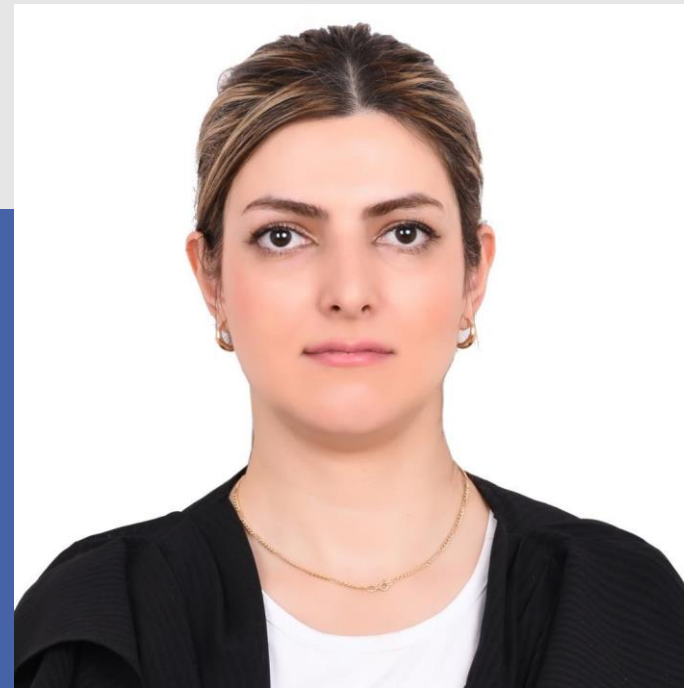
- Full Lifecycle Management: We take responsibility for every stage of the project lifecycle, including architecture design, development, testing, deployment, and post-delivery support.
- Technical Leadership: A dedicated team of experts leads the project, utilizing the latest technologies and methodologies to deliver innovative, high-quality outcomes.
- Quality Assurance: Rigorously tested and reviewed deliverables, with a focus on quality and adherence to industry standards. Comprehensive post-delivery support is provided to ensure a smooth transition and ongoing success.

Our Team



Arash

CEO and Co founder



Samaneh

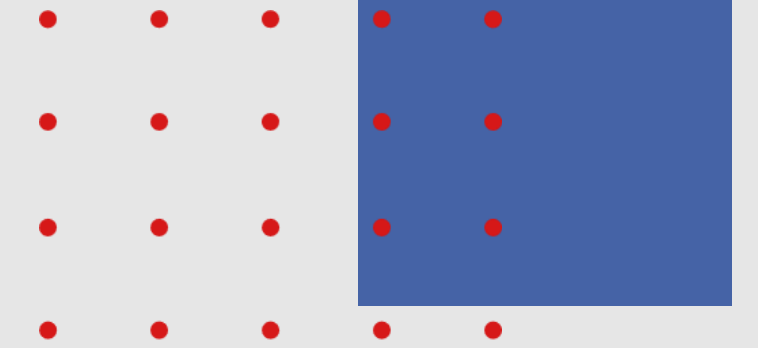
Senior developer



Amin

Senior developer

Contact Us



📍 6 Forest laneway

📞 647-646-5803

✉️ bhpsolutionceo@gmail.com

📷 @bhpsolution

🌐 Bhpsolution.com





This comprehensive proposal highlights our strategic approach to **IT Staff Augmentation** and **Project-Based** models. We are confident that our tailored services will exceed your expectations and drive success for your business through efficient, results-driven solutions.



Thanks!